

# 12 MAJOR SCALES

TROMBONE

edited September 2011

CONCERT F



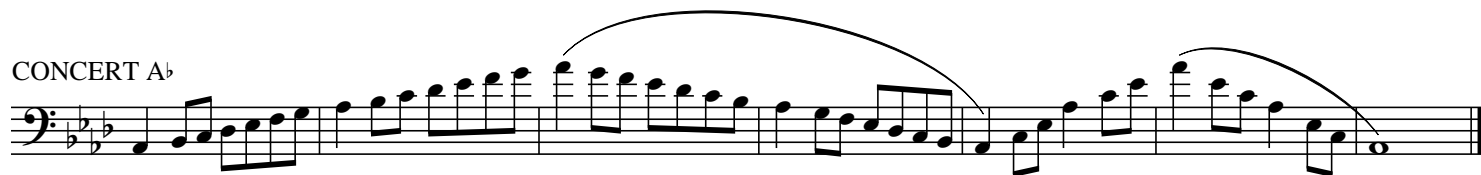
CONCERT B $\flat$



CONCERT E $\flat$



CONCERT A $\flat$



CONCERT D $\flat$



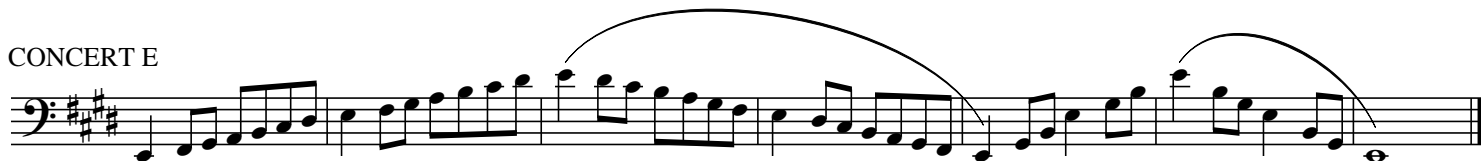
CONCERT G $\flat$



CONCERT B



CONCERT E



CONCERT A



CONCERT D



CONCERT G

Musical staff for Concert G, featuring a bass clef and a key signature of one sharp (F#). The staff contains a melodic line with eighth and sixteenth notes, including a long slur over the final two measures.

CONCERT C

Musical staff for Concert C, featuring a bass clef and a key signature of one sharp (F#). The staff contains a melodic line with eighth and sixteenth notes, including a long slur over the final two measures.

CHROMATIC

Musical staff for Chromatic, featuring a bass clef and a key signature of one sharp (F#). The staff contains a chromatic scale consisting of eighth and sixteenth notes.

Musical staff for Chromatic continuation, featuring a bass clef and a key signature of one sharp (F#). The staff contains a chromatic scale with a long slur over the first two measures. A measure number '74' is written at the beginning of the staff.