

# 12 MAJOR SCALES

TENOR SAX

edited September 2011

CONCERT F



CONCERT B $\flat$



CONCERT E $\flat$



CONCERT A $\flat$



CONCERT D $\flat$



CONCERT G $\flat$



CONCERT B



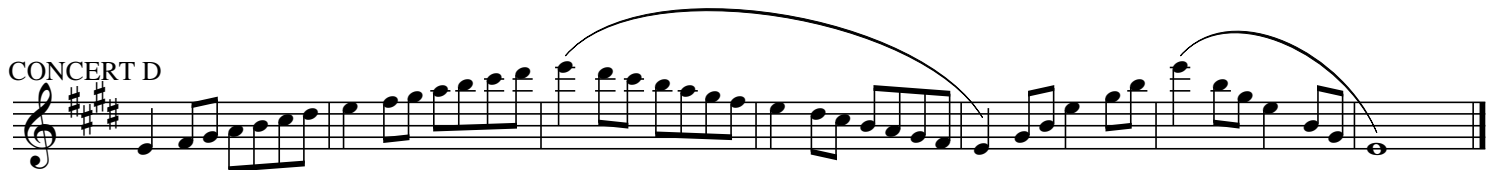
CONCERT E



CONCERT A



CONCERT D



CONCERT G

Musical staff for Concert G, featuring a treble clef, a key signature of two sharps (F# and C#), and a melody with a long slur over the first two measures.

CONCERT C

Musical staff for Concert C, featuring a treble clef, a key signature of two sharps (F# and C#), and a melody with a long slur over the first two measures.

CHROMATIC

Musical staff for Chromatic, featuring a treble clef, a key signature of one flat (Bb), and a chromatic scale. The first staff shows the ascending scale, and the second staff shows the descending scale, both with a long slur over the entire passage.