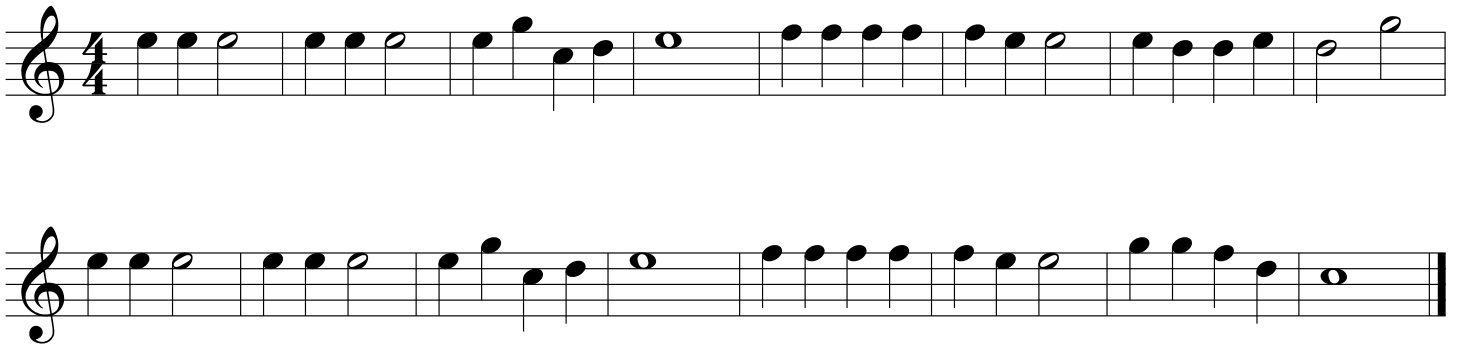


Christmas Songs for Band Kids

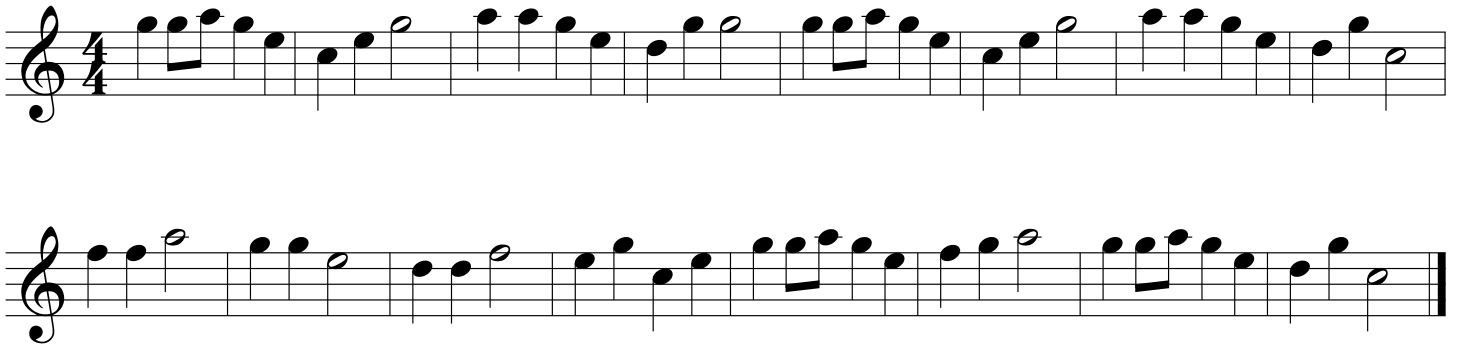
Tenor Sax

The following is a collection of traditional Christmas hymns and popular songs for band students to play for fun. The songs are in no particular order. The songs are transposed for each instrument so that you can play together with your friends. Have fun!

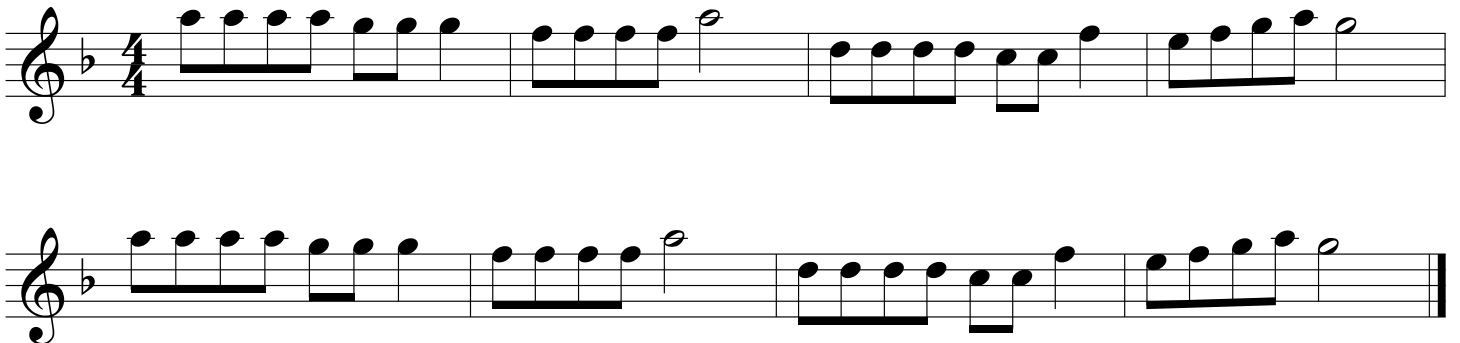
Jingle Bells



Up On The Housetop



Jolly Old St. Nicholas



We Wish You A Merry Christmas

Musical notation for the song "We Wish You A Merry Christmas". It consists of two staves of music in 3/4 time, featuring a melody in the treble clef with a key signature of one flat (Bb).

Deck The Hall

Musical notation for the song "Deck The Hall". It consists of three staves of music in 4/4 time, featuring a melody in the treble clef with a key signature of one flat (Bb).

The First Nowell

Musical notation for the song "The First Nowell". It consists of three staves of music in 3/4 time, featuring a melody in the treble clef with a key signature of one flat (Bb).

Go Tell It On The Mountain

verse

Musical notation for the verse of 'Go Tell It On The Mountain'. The piece is in 4/4 time and B-flat major. The first line contains the first two measures, and the second line contains the next two measures. The melody consists of quarter and eighth notes, with some beamed eighth notes.

chorus

Musical notation for the chorus of 'Go Tell It On The Mountain'. The piece is in 4/4 time and B-flat major. The first line contains the first two measures, and the second line contains the next two measures. The melody is primarily composed of quarter notes, with a final measure featuring a half note and a repeat sign.

God Rest Ye Merry, Gentlemen

Musical notation for 'God Rest Ye Merry, Gentlemen'. The piece is in 4/4 time and B-flat major. It consists of five lines of music. The first line starts with a whole rest followed by a quarter rest, then a series of quarter notes. The subsequent lines continue the melody with quarter notes and half notes, ending with a final whole note and a repeat sign.

Hark The Herlad Angels Sing

Musical score for 'Hark The Herlad Angels Sing' in 4/4 time, key of B-flat major. The score consists of five staves of music. The first staff begins with a treble clef, a key signature of one flat (B-flat), and a 4/4 time signature. The melody is written in a simple, stepwise fashion, primarily using quarter and eighth notes. The second staff continues the melody with similar rhythmic values. The third staff features a series of eighth notes, creating a more active texture. The fourth and fifth staves conclude the piece with a final cadence, ending on a whole note chord.

Away In A Manger

Musical score for 'Away In A Manger' in 3/4 time, key of B-flat major. The score consists of four staves of music. The first staff begins with a treble clef, a key signature of one flat (B-flat), and a 3/4 time signature. The melody starts with a quarter rest, followed by a series of quarter and eighth notes. The second staff continues the melody with a mix of quarter and eighth notes. The third and fourth staves conclude the piece with a final cadence, ending on a whole note chord.

O Little Town Of Bethlehem

Musical score for 'O Little Town Of Bethlehem' in G major, 4/4 time. The score consists of four staves of music. The first staff begins with a treble clef, a key signature of one sharp (F#), and a 4/4 time signature. The melody is written in a simple, folk-like style with quarter and eighth notes. The second and third staves continue the melody, and the fourth staff concludes the piece with a double bar line.

Joy To The World

Musical score for 'Joy To The World' in G major, 4/4 time. The score consists of three staves of music. The first staff begins with a treble clef, a key signature of one sharp (F#), and a 4/4 time signature. The melody is written in a simple, folk-like style with quarter and eighth notes. The second and third staves continue the melody, and the third staff concludes the piece with a double bar line.

Silent Night

The musical score for "Silent Night" is written in 3/4 time and consists of three staves. The first staff begins with a treble clef and a 3/4 time signature. The melody starts with a dotted quarter note G4, followed by an eighth note A4, a quarter note B4, and a dotted half note C5. The second staff continues the melody with a dotted quarter note D5, an eighth note E5, a quarter note F5, and a dotted half note G5. The third staff concludes the piece with a dotted quarter note A5, an eighth note B5, a quarter note C6, and a dotted half note B5, ending with a double bar line.

What Child Is This

The musical score for "What Child Is This" is written in 3/4 time and consists of four staves. The first staff begins with a treble clef, a key signature of one flat (Bb), and a 3/4 time signature. The melody starts with a dotted quarter note Bb4, followed by an eighth note C5, a quarter note D5, and a dotted half note E5. The second staff continues with a dotted quarter note F5, an eighth note G5, a quarter note A5, and a dotted half note Bb5. The third staff continues with a dotted quarter note C6, an eighth note D6, a quarter note E6, and a dotted half note F6. The fourth staff concludes the piece with a dotted quarter note G6, an eighth note A6, a quarter note Bb6, and a dotted half note C7, ending with a double bar line.

Angels We Have Heard On High

Musical score for 'Angels We Have Heard On High' in 4/4 time, featuring a treble clef and a key signature of one flat (B-flat). The score consists of three staves. The first staff contains the main melody with a series of eighth notes and quarter notes. The second and third staves feature a more melodic line with a long slur over the first half, indicating a sustained or legato passage.

Have Yourself A Merry Little Christmas

Musical score for 'Have Yourself A Merry Little Christmas' in 4/4 time, featuring a treble clef and a key signature of one flat (B-flat). The score consists of five staves. The first four staves contain the main melody, which includes a key signature change to two sharps (F# and C#) in the second staff. The fifth staff shows the melody ending with a double bar line, followed by a rest for four measures.

Rudolph The Red Nosed Reindeer

Musical score for 'Rudolph The Red Nosed Reindeer' in 4/4 time, consisting of four staves of music. The melody is written in treble clef. The first staff begins with a treble clef and a 4/4 time signature. The music features a mix of eighth and sixteenth notes, with some measures containing beamed sixteenth notes. The piece concludes with a double bar line at the end of the fourth staff.

Rockin Around The Christmas Tree

Musical score for 'Rockin Around The Christmas Tree' in 4/4 time, consisting of four staves of music. The melody is written in treble clef. The first staff begins with a treble clef and a 4/4 time signature. The music features a mix of eighth and sixteenth notes, with some measures containing beamed sixteenth notes and a sharp sign (#) indicating a key signature change. The piece concludes with a double bar line at the end of the fourth staff.

Santa Claus Is Coming To Town

Musical score for 'Santa Claus Is Coming To Town' in 4/4 time. The score consists of four staves of music. The first staff begins with a treble clef, a 4/4 time signature, and a key signature of one sharp (F#). The melody is characterized by eighth and sixteenth notes, with a prominent dotted quarter note in the first measure. The second staff continues the melody with similar rhythmic patterns. The third staff features a key signature change to two sharps (F# and C#) in the fourth measure, followed by a return to the original key signature. The fourth staff concludes the piece with a final cadence.

White Christmas

Musical score for 'White Christmas' in 4/4 time. The score consists of four staves of music. The first staff begins with a treble clef and a key signature of one sharp (F#). The melody is primarily composed of quarter and eighth notes. The second staff continues the melody with a long note in the final measure. The third staff features a key signature change to two sharps (F# and C#) in the fourth measure. The fourth staff concludes the piece with a final cadence.

Frosty The Snowman

The image displays a musical score for the song "Frosty The Snowman" in 4/4 time. The score is written on six staves, each beginning with a treble clef. The first staff includes a 4/4 time signature. The melody is composed of eighth and quarter notes, with some measures containing beamed eighth notes. The key signature is one sharp (F#), and the piece concludes with a double bar line.

Let It Snow

