

Christmas Songs for Band Kids

E. Horn

The following is a collection of traditional Christmas hymns and popular songs for band students to play for fun. The songs are in no particular order. The songs are transposed for each instrument so that you can play together with your friends. Have fun!

Jingle Bells

Two staves of musical notation for the song "Jingle Bells". The first staff begins with a treble clef, a key signature of one flat (B-flat), and a 4/4 time signature. The melody consists of eighth and quarter notes, with a final whole note. The second staff continues the melody, ending with a double bar line.

Up On The Housetop

Two staves of musical notation for the song "Up On The Housetop". The first staff begins with a treble clef, a key signature of one flat (B-flat), and a 4/4 time signature. The melody features eighth and quarter notes. The second staff continues the melody, ending with a double bar line.

Jolly Old St. Nicholas

Two staves of musical notation for the song "Jolly Old St. Nicholas". The first staff begins with a treble clef, a key signature of two flats (B-flat and E-flat), and a 4/4 time signature. The melody is characterized by eighth-note patterns. The second staff continues the melody, ending with a double bar line.

We Wish You A Merry Christmas

Musical notation for the song "We Wish You A Merry Christmas". It consists of two staves of music in 3/4 time, featuring a treble clef and a key signature of one flat (Bb). The melody is written in a simple, accessible style with various note values including quarter, eighth, and sixteenth notes.

Deck The Hall

Musical notation for the song "Deck The Hall". It consists of three staves of music in 4/4 time, featuring a treble clef and a key signature of one flat (Bb). The notation includes repeat signs and various note values such as quarter, eighth, and sixteenth notes.

The First Nowell

Musical notation for the song "The First Nowell". It consists of three staves of music in 3/4 time, featuring a treble clef and a key signature of one flat (Bb). The melody is written in a simple, accessible style with various note values including quarter, eighth, and sixteenth notes.

Go Tell It On The Mountain

verse

The first two lines of the verse are written on a single treble clef staff in 4/4 time with a key signature of two flats (B-flat and E-flat). The first line contains four measures: a half note G4, a quarter note A4, a quarter note B-flat4, and a half note C5. The second line contains four measures: a quarter note D5, a quarter note E-flat5, a quarter note F5, a quarter note G5, a quarter note F5, a quarter note E-flat5, a quarter note D5, a quarter note C5, a quarter note B-flat4, a quarter note A4, a quarter note G4, and a half note F4.

chorus

The first two lines of the chorus are written on a single treble clef staff in 4/4 time with a key signature of two flats. The first line contains four measures: a quarter note G4, a quarter note A4, a quarter note B-flat4, a quarter note C5, a quarter note D5, a quarter note E-flat5, a quarter note F5, a quarter note G5, a quarter note F5, a quarter note E-flat5, a quarter note D5, a quarter note C5, a quarter note B-flat4, a quarter note A4, a quarter note G4, and a half note F4. The second line contains four measures: a quarter note E-flat4, a quarter note D4, a quarter note C4, a quarter note B3, a quarter note A3, a quarter note G3, a quarter note F3, a quarter note E-flat3, a quarter note D3, a quarter note C3, a quarter note B2, a quarter note A2, a quarter note G2, a quarter note F2, a quarter note E-flat2, a quarter note D2, a quarter note C2, and a half note B1.

God Rest Ye Merry, Gentlemen

The first five lines of the piece are written on a single treble clef staff in 4/4 time with a key signature of two flats. The first line starts with a whole rest, followed by a quarter note G4, a quarter note A4, a quarter note B-flat4, a quarter note C5, a quarter note D5, a quarter note E-flat5, a quarter note F5, a quarter note G5, a quarter note F5, a quarter note E-flat5, a quarter note D5, a quarter note C5, a quarter note B-flat4, a quarter note A4, a quarter note G4, and a half note F4. The second line contains four measures: a quarter note E-flat4, a quarter note D4, a quarter note C4, a quarter note B3, a quarter note A3, a quarter note G3, a quarter note F3, a quarter note E-flat3, a quarter note D3, a quarter note C3, a quarter note B2, a quarter note A2, a quarter note G2, a quarter note F2, a quarter note E-flat2, a quarter note D2, a quarter note C2, and a half note B1. The third line contains four measures: a quarter note G4, a quarter note A4, a quarter note B-flat4, a quarter note C5, a quarter note D5, a quarter note E-flat5, a quarter note F5, a quarter note G5, a quarter note F5, a quarter note E-flat5, a quarter note D5, a quarter note C5, a quarter note B-flat4, a quarter note A4, a quarter note G4, and a half note F4. The fourth line contains four measures: a quarter note E-flat4, a quarter note D4, a quarter note C4, a quarter note B3, a quarter note A3, a quarter note G3, a quarter note F3, a quarter note E-flat3, a quarter note D3, a quarter note C3, a quarter note B2, a quarter note A2, a quarter note G2, a quarter note F2, a quarter note E-flat2, a quarter note D2, a quarter note C2, and a half note B1. The fifth line contains four measures: a quarter note G4, a quarter note A4, a quarter note B-flat4, a quarter note C5, a quarter note D5, a quarter note E-flat5, a quarter note F5, a quarter note G5, a quarter note F5, a quarter note E-flat5, a quarter note D5, a quarter note C5, a quarter note B-flat4, a quarter note A4, a quarter note G4, and a half note F4.

Hark The Herlad Angels Sing

Musical score for 'Hark The Herlad Angels Sing' in 4/4 time, key of B-flat major. The score consists of five staves of music. The first staff begins with a treble clef, a key signature of two flats (B-flat major), and a 4/4 time signature. The melody is written in a simple, accessible style with a mix of quarter, eighth, and dotted notes. The piece concludes with a double bar line at the end of the fifth staff.

Away In A Manger

Musical score for 'Away In A Manger' in 3/4 time, key of B-flat major. The score consists of four staves of music. The first staff begins with a treble clef, a key signature of two flats (B-flat major), and a 3/4 time signature. The melody is written in a simple, accessible style with a mix of quarter, eighth, and dotted notes. The piece concludes with a double bar line at the end of the fourth staff.

O Little Town Of Bethlehem

Musical score for 'O Little Town Of Bethlehem' in G major, 4/4 time. The score consists of four staves of music. The first staff begins with a whole rest followed by a quarter rest, then the melody starts on G4. The second staff continues the melody with eighth and quarter notes. The third staff continues with quarter and eighth notes. The fourth staff concludes the piece with a quarter note G4, a quarter rest, and a final whole note G4.

Joy To The World

Musical score for 'Joy To The World' in G major, 4/4 time. The score consists of three staves of music. The first staff begins with a quarter note G4, followed by eighth and quarter notes. The second staff features a melodic line with many beamed eighth notes and quarter notes. The third staff continues with eighth and quarter notes, ending with a whole note G4.

O Come, O Come, Emmanuel

Musical score for 'O Come, O Come, Emmanuel' in G major, 4/4 time. The score consists of three staves. The first staff begins with a whole rest followed by a quarter rest, then a series of quarter notes: G4, A4, B4, C5, B4, A4, G4. The second staff continues with quarter notes: F#4, E4, D4, C4, B3, A3, G3, F#3, E3, D3, C3, B2, A2, G2. The third staff concludes with a half note G2, followed by quarter notes: F#2, E2, D2, C2, B1, A1, G1, and ends with a whole note G1.

O Come All Ye Faithful

Musical score for 'O Come All Ye Faithful' in G major, 4/4 time. The score consists of three staves. The first staff begins with a whole rest followed by a quarter rest, then a series of quarter notes: G4, A4, B4, C5, B4, A4, G4. The second staff continues with quarter notes: F#4, E4, D4, C4, B3, A3, G3, F#3, E3, D3, C3, B2, A2, G2. The third staff concludes with a half note G2, followed by quarter notes: F#2, E2, D2, C2, B1, A1, G1, and ends with a whole note G1.

Silent Night

Musical score for 'Silent Night' in 3/4 time, B-flat major. The score consists of three staves of music. The first staff begins with a treble clef, a key signature of one flat (B-flat), and a 3/4 time signature. The melody is written in a simple, lyrical style with dotted rhythms and rests. The second staff continues the melody, and the third staff concludes the piece with a final note and a double bar line.

What Child Is This

Musical score for 'What Child Is This' in 3/4 time, B-flat major. The score consists of four staves of music. The first staff begins with a treble clef, a key signature of one flat (B-flat), and a 3/4 time signature. The melody is written in a simple, lyrical style with dotted rhythms and rests. The second staff continues the melody, and the third and fourth staves conclude the piece with a final note and a double bar line.

Angels We Have Heard On High

Musical score for 'Angels We Have Heard On High' in G major, 4/4 time. The score consists of three staves. The first staff contains the first four measures. The second and third staves contain the remaining measures, with a long slur spanning across both staves. The melody is written in treble clef.

Have Yourself A Merry Little Christmas

Musical score for 'Have Yourself A Merry Little Christmas' in G major, 4/4 time. The score consists of five staves. The first four staves contain the main melody, and the fifth staff contains the final measures, including a double bar line and a final cadence. The melody is written in treble clef.

Rudolph The Red Nosed Reindeer

Musical notation for the song 'Rudolph The Red Nosed Reindeer'. It consists of four staves of music in 4/4 time, written in the key of B-flat major. The melody is characterized by eighth and sixteenth note patterns, with a prominent triplet of eighth notes in the first measure of each staff. The piece concludes with a double bar line at the end of the fourth staff.

Rockin Around The Christmas Tree

Musical notation for the song 'Rockin Around The Christmas Tree'. It consists of four staves of music in 4/4 time, written in the key of B-flat major. The melody features a mix of eighth and quarter notes, with a notable sharp sign (F#) appearing in the fourth measure of the second and fourth staves. The piece concludes with a double bar line at the end of the fourth staff.

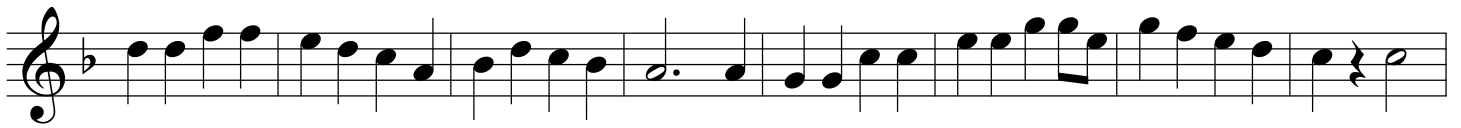
Santa Claus Is Coming To Town

Musical notation for the song 'Santa Claus Is Coming To Town'. It consists of four staves of music in 4/4 time, written in a key signature of one flat (B-flat). The melody is characterized by a rhythmic pattern of eighth and sixteenth notes, with a prominent triplet of eighth notes in the first measure of each staff. The piece concludes with a double bar line.

White Christmas

Musical notation for the song 'White Christmas'. It consists of four staves of music in 4/4 time, written in a key signature of one flat (B-flat). The melody is primarily composed of quarter and eighth notes, with a notable triplet of eighth notes in the first measure of the first staff. The piece concludes with a double bar line.

Frosty The Snowman



Let It Snow

